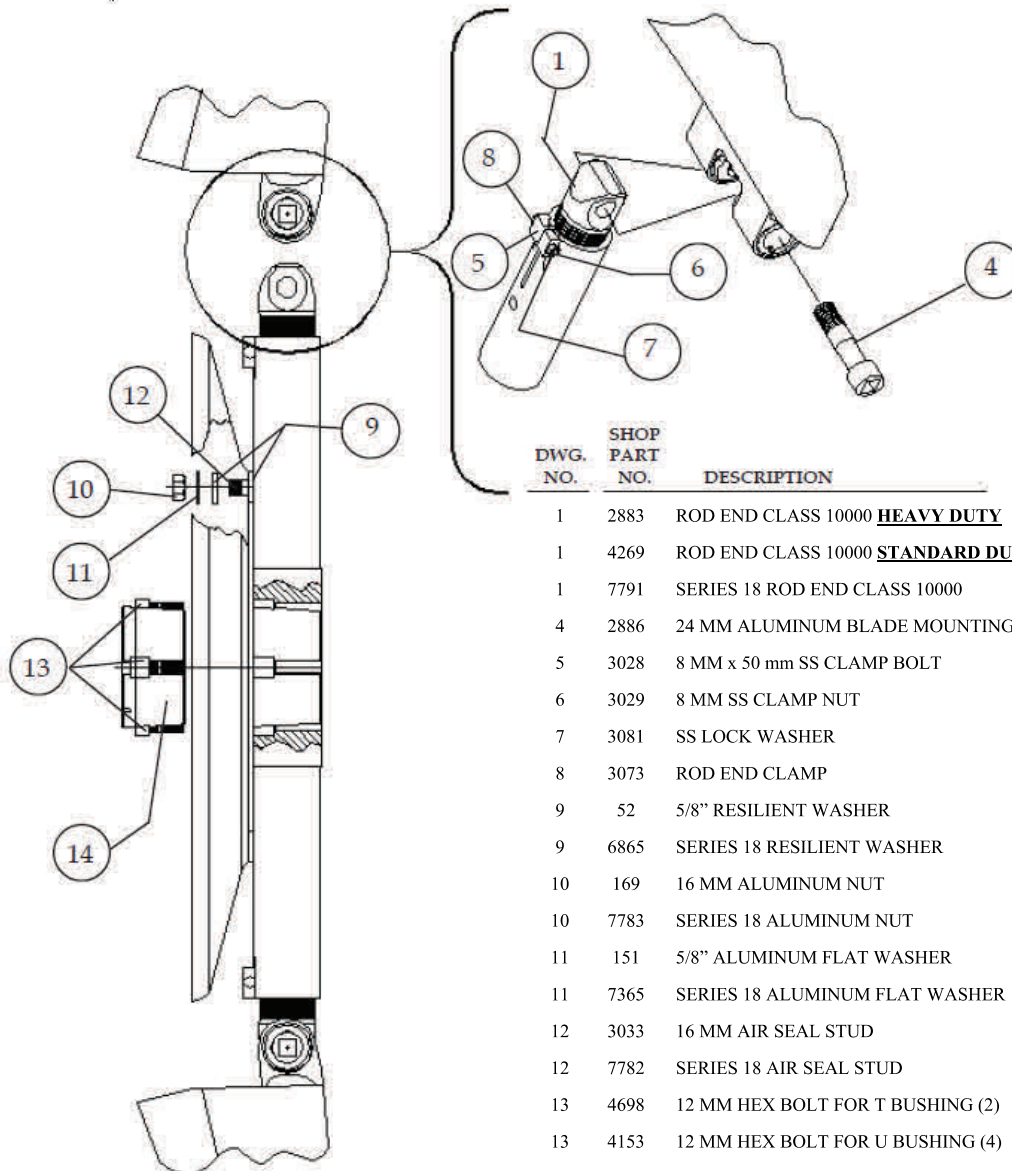


3.5 MANUAL FAN PARTS LIST

NOT TO SCALE. SOME DIMENSIONS
AND ANGLES HAVE BEEN
EXAGGERATED FOR CLARITY



DWG. NO.	SHOP PART NO.	DESCRIPTION
1	2883	ROD END CLASS 10000 HEAVY DUTY
1	4269	ROD END CLASS 10000 STANDARD DUTY
1	7791	SERIES 18 ROD END CLASS 10000
4	2886	24 MM ALUMINUM BLADE MOUNTING BOLT
5	3028	8 MM x 50 mm SS CLAMP BOLT
6	3029	8 MM SS CLAMP NUT
7	3081	SS LOCK WASHER
8	3073	ROD END CLAMP
9	52	5/8" RESILIENT WASHER
9	6865	SERIES 18 RESILIENT WASHER
10	169	16 MM ALUMINUM NUT
10	7783	SERIES 18 ALUMINUM NUT
11	151	5/8" ALUMINUM FLAT WASHER
11	7365	SERIES 18 ALUMINUM FLAT WASHER
12	3033	16 MM AIR SEAL STUD
12	7782	SERIES 18 AIR SEAL STUD
13	4698	12 MM HEX BOLT FOR T BUSHING (2)
13	4153	12 MM HEX BOLT FOR U BUSHING (4)
13	4154	16 MM HEX BOLT FOR W BUSHING (4)
13	4159	16 MM HEX BOLT FOR Z BUSHING (8)
14		T BUSHING (3")
14		U BUSHING (4")
14		W BUSHING (5.5")
14		Z BUSHING (7")