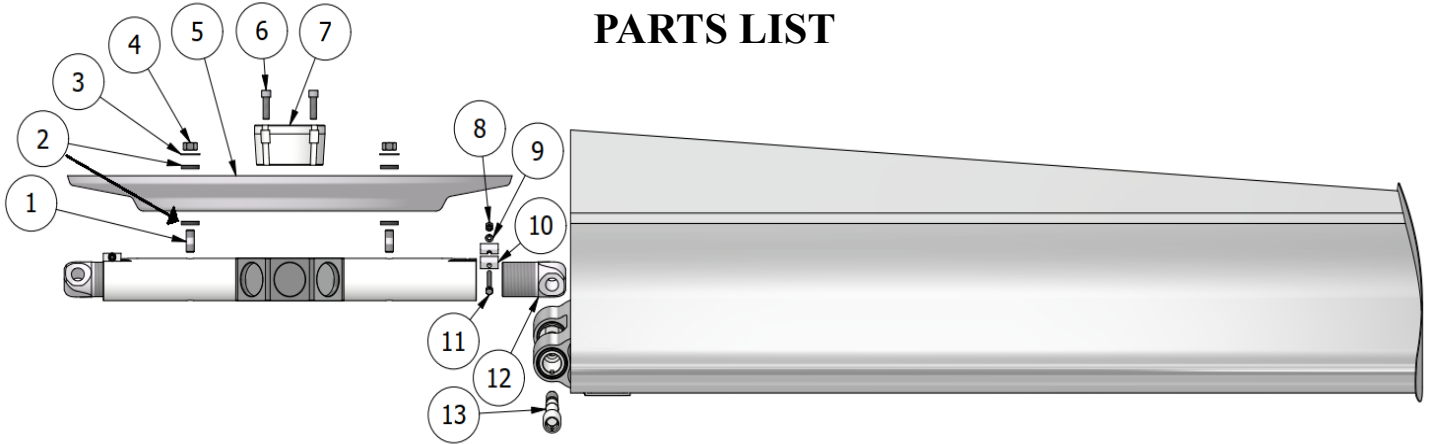




CLASS 10000 SC & EC

PARTS LIST



DWG. NO.	PART NUMBER	DESCRIPTION
1	3033 7782	16 MM AIRSEAL STUD SERIES 18 AIR SEAL STUD
2	52 6865	5/8" RESILIENT WASHER SERIES 18 RESILIENT WASHER
3	151 7365	5/8" ALUMINUM FLAT WASHER SERIES 18 ALUMINUM FLAT WASHER
4	169 7783	16MM ALUMINUM NUT 10MM SERIES 18 ALUMINUM NUT
5		AIR SEAL
6	4698 4153 4154 4159	BUSHING CAP SCREW: 12MM HEX FOR T BUSHING (2) 12MM HEX FOR U BUSHING (4) 16MM HEX FOR W BUSHING (4) 16MM HEX FOR Z BUSHING (8)
7		BUSHING: T(3") U(4") W(5.5") Z(7")
8	3029	8MM SS CLAMP NUT
9	3081	SS LOCK CLAMP WASHER
10	3073	ROD END CLAMP
11	3028	8MM SS CLAMP BOLT
12	4269 2883 7791	CLASS 10000 SD ROD END CLASS 10000 HD ROD END CLASS 10000 SERIES 18 ROD END
13	2886	24MM ALUMINUM BLADE BOLT